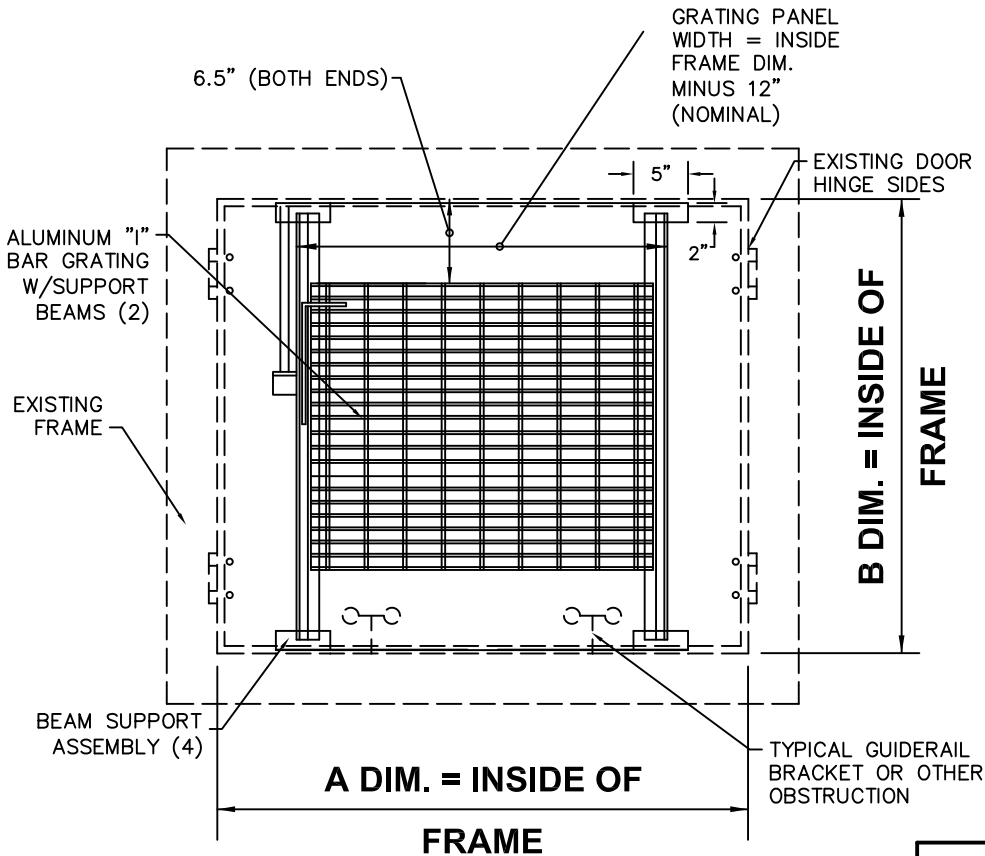
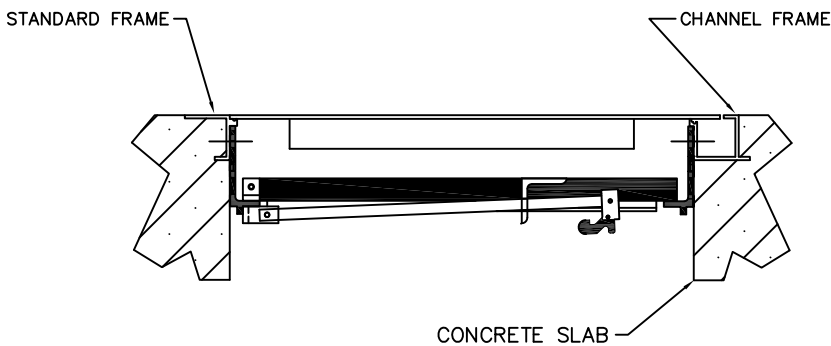




NOTE: COVERS NOT SHOWN FOR CLARITY



PLAN VIEW



SECTION A-A

STANDARD FEATURES:

- HINGED ALUMINUM "I" BAR GRATING PANEL
- T-316 STAINLESS STEEL HARDWARE AND HOLD-OPEN ARM
- SPRING LOADED LIFT HANDLE
- SAFETY ORANGE GRATING PANEL POWDER COATED
- 300 LB. PER SQ. FT. LOAD RATING
- MOUNTING HARDWARE
- 3 YEAR GUARANTEE

HARDWARE PACKAGES

CHOOSE ONE BELOW IN REQUIRED INFORMATION

- C = CONCRETE ANCHOR BOLTS
- D = FLAT HEAD BOLTS (CHANNEL FRAME)

REQUIRED INFORMATION

QUA	"A"	"B"	"C" OR "D"
TAG:			
TAG:			
TAG:			
TAG:			

Important:

With any custom built item, it is imperative accurate information be relayed to the manufacturer. Carefully review the above information to insure there is no miscommunication with regard to the size of the existing opening, depth and condition of the concrete as well as obstructions which could adversely affect the operation of the Retro-Grate.

ROUND ALL DIM.S TO THE NEAREST 1/4"